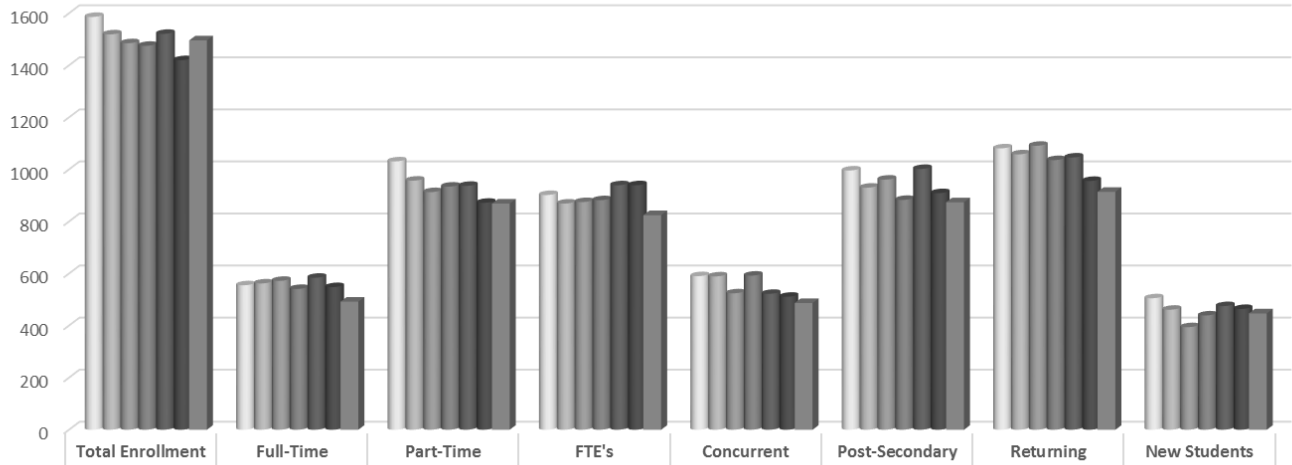




## Enrollment History Information-Fall to Fall Academic Years 2014-2021

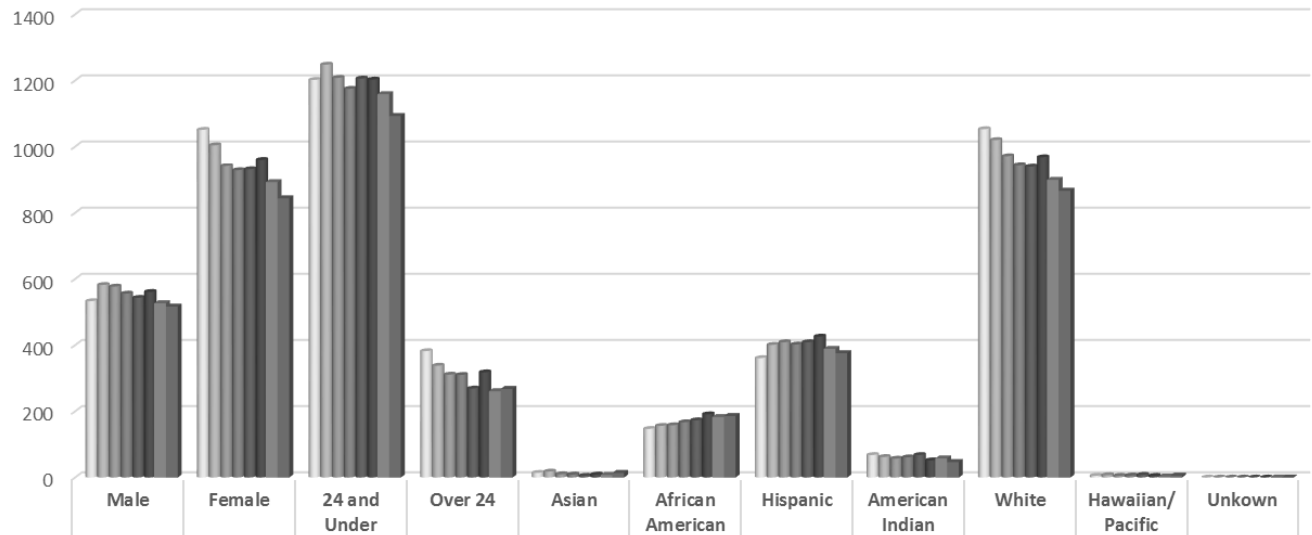


### Enrollment History-Student Status, Fall to Fall 2014-2021



	Total Enrollment	Full-Time	Part-Time	FTE's	Concurrent Enrollment	Post-Secondary Enrollment	Returning Students	New Students
2015	1586	555	1031	901.807	590	996	1081	505
2016	1519	562	957	868.87	589	930	1058	461
2017	1485	572	913	874.67	524	961	1091	394
2018	1475	541	934	881.93	592	883	1036	439
2019	1521	584	937	939.347	522	1002	1046	475
2020	1420	548	872	939.47	511	909	956	464
2021	1496	492	869	824.46	487	874	914	447

### Enrollment History: Student Demographic Profiles, Fall 2014-2021



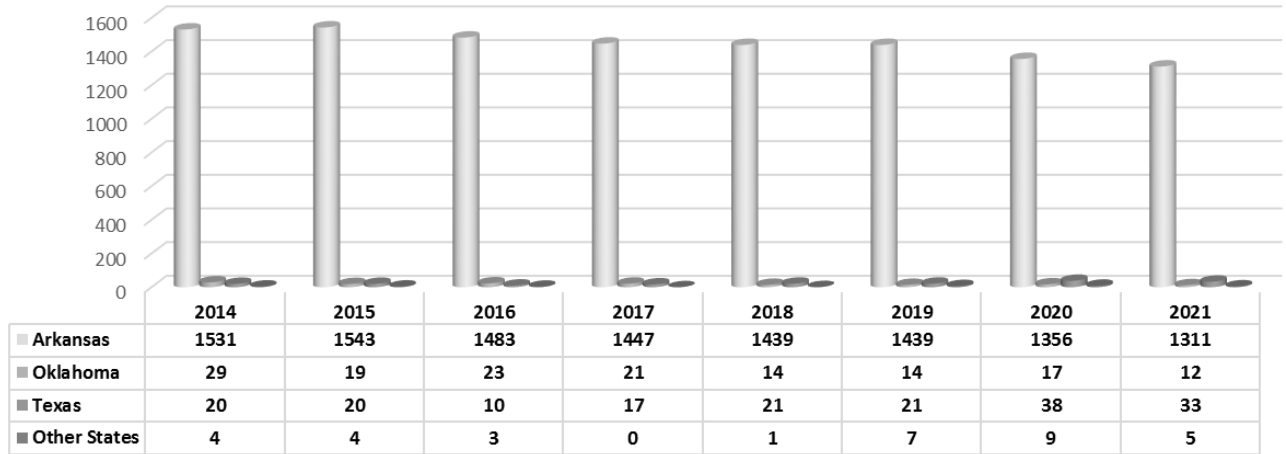
	Male	Female	24 and Under	Over 24	Asian	African American	Hispanic	American Indian	White	Hawaiian/Pacific Islander	Unknwn
2014	533	1051	1202	382	14	147	361	68	1053	5	0
2015	582	1004	1248	338	18	156	401	62	1020	7	0
2016	577	942	1208	311	10	158	409	57	971	5	0
2017	556	929	1175	310	9	167	402	61	944	6	0
2018	543	932	1206	269	5	173	409	68	940	8	0
2019	561	960	1203	318	9	191	426	52	968	5	0
2020	527	893	1159	261	8	183	389	58	900	3	0
2021	517	844	1093	268	14	186	376	47	867	6	0



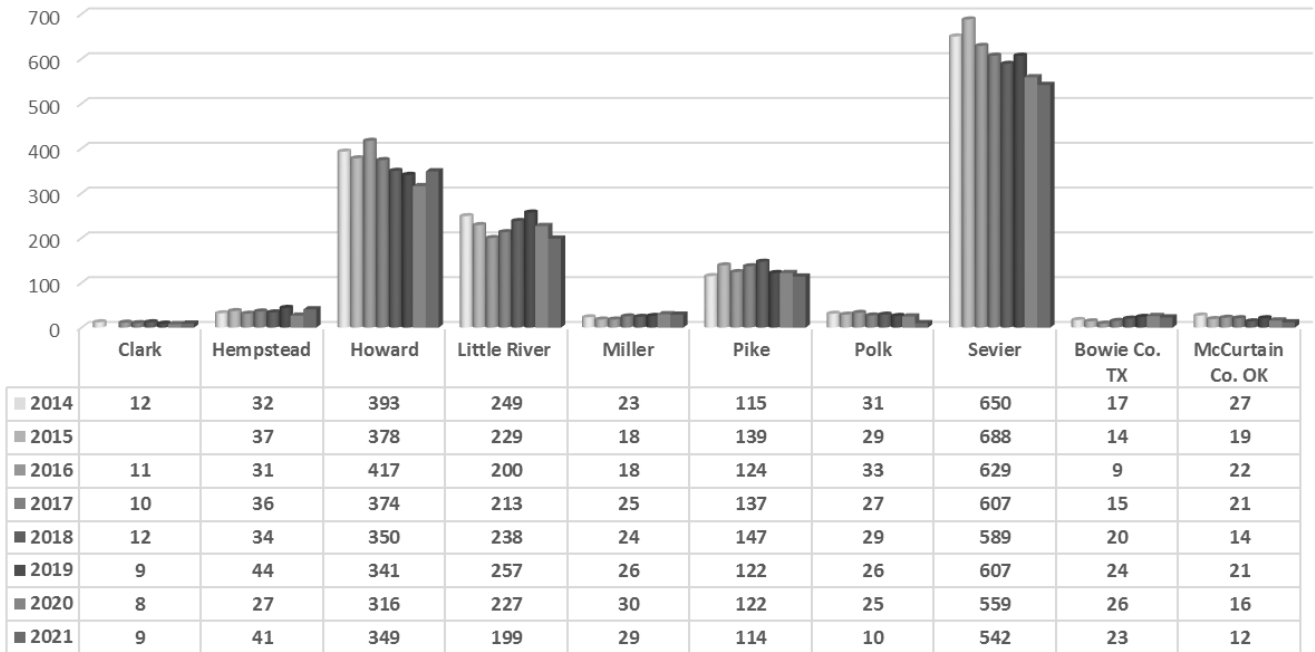
## Enrollment History Information-Fall to Fall Academic Years 2014-2021



### Enrollment History: By State, Fall 2014-2021



### Enrollment History: By County, Fall 2014-2021

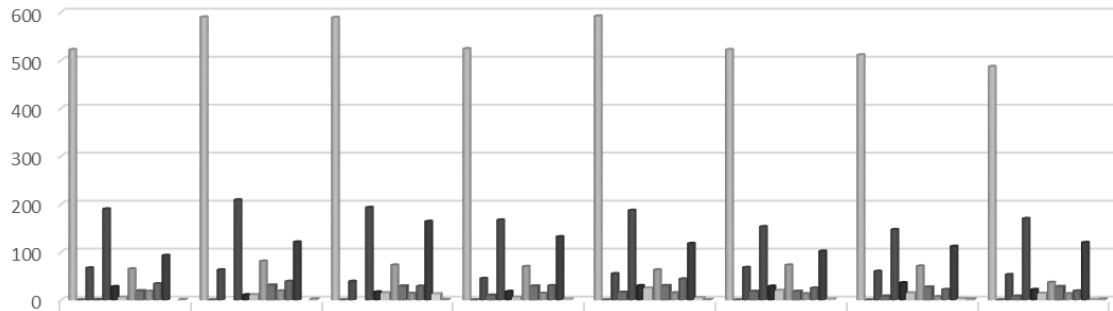




## Enrollment History Information-Fall to Fall Academic Years 2014-2021

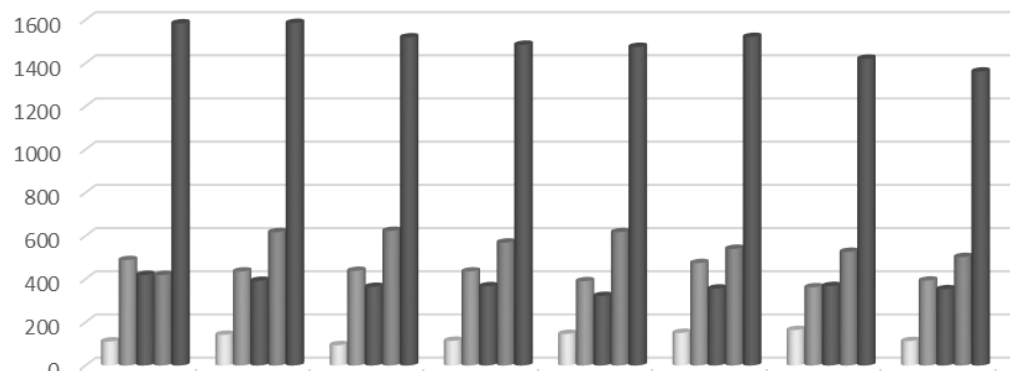


### Enrollment History: Concurrent Students, Fall 2014-2021



	2014	2015	2016	2017	2018	2019	2020	2021
■ Enrolled Concurrent	522	590	589	524	592	522	511	487
■ % of Total enrollment	33%	37%	39%	35%	40%	34%	36%	36%
■ Ashdown	67	63	39	45	55	68	60	53
■ Centerpoint	1			10	16	18	8	8
■ De Queen	190	209	193	167	187	153	147	170
■ Dierks	28	11	17	18	30	29	36	22
■ Foreman	6	11	15	6	25	20	15	14
■ Horatio	65	81	73	70	63	73	71	37
■ Kirby	19	31	29	29	30	18	27	28
■ Mineral Springs	18	19	14	14	15	13	7	13
■ Murfreesboro	34	39	29	30	44	25	22	19
■ Nashville	93	121	164	132	118	102	112	120
■ Umpire			13	2	5	2	3	1
■ Home-Schooled	1	2	1		1		2	2

### Enrollment History by Degree/Program: Fall 2014-2021



	2014	2015	2016	2017	2018	2019	2020	2021
■ Certificate Majors	111	142	94	114	146	151	164	113
■ AAS Majors	488	435	438	435	390	474	362	393
■ General Education Majors	419	392	364	367	322	356	368	353
■ Undeclared-includes HS students	419	617	623	569	617	540	526	502
■ Total Enrollment	1584	1586	1519	1485	1475	1521	1420	1361