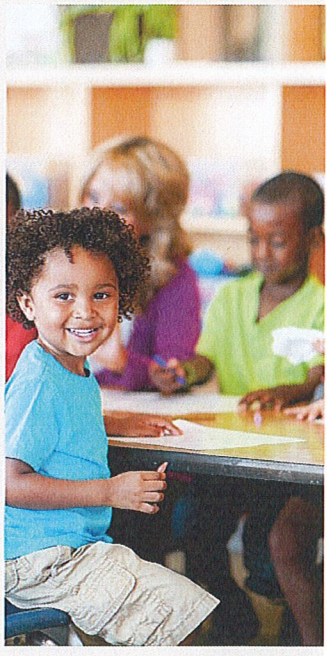
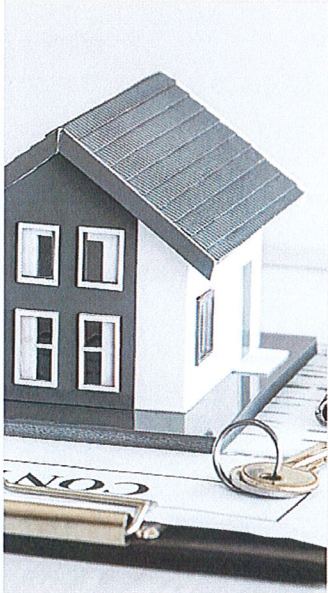


Resource Guide

Sevier, Howard, and Little River County



**HELPING PEOPLE BREAK BARRIERS TO FIND
FREEDOM AND OPPORTUNITY**

Who We Are

CENTER FOR STUDENT SUCCESS/RECURSOS PARA LATINOS DE
SOUTHWEST ARKANSAS

Community resource guides play a vital role in promoting accessibility, empowerment, efficiency, support networks, equity, and community development, ultimately helping to improve the overall quality of life for its community members.

Our team is dedicated to providing high-quality services. We pride ourselves on the type of customer service and professionalism we provide to our students and community.

COMMUNITY RESOURCE GUIDES ARE IMPORTANT FOR SEVERAL REASONS:

ACCESSIBILITY: THEY PROVIDE EASILY ACCESSIBLE INFORMATION ABOUT LOCAL RESOURCES AND SERVICES AVAILABLE TO COMMUNITY MEMBERS. THIS CAN INCLUDE EVERYTHING FROM HEALTH CARE SERVICES TO EDUCATIONAL PROGRAMS, FOOD ASSISTANCE, HOUSING SUPPORT, JOB TRAINING, LEGAL ASSISTANCE, AND MORE.

EMPOWERMENT: BY PROVIDING COMPREHENSIVE INFORMATION ABOUT AVAILABLE RESOURCES, COMMUNITY MEMBERS ARE EMPOWERED TO ACCESS THE SUPPORT THEY NEED TO IMPROVE THEIR LIVES. THIS CAN BE ESPECIALLY CRUCIAL FOR MARGINALIZED OR VULNERABLE POPULATIONS WHO MAY FACE BARRIERS TO ACCESSING INFORMATION OR SERVICES.

SUPPORT NETWORKS: RESOURCE GUIDES HELP STRENGTHEN COMMUNITY SUPPORT NETWORKS BY CONNECTING INDIVIDUALS AND FAMILIES TO SERVICES AND ORGANIZATIONS THAT CAN MEET THEIR SPECIFIC NEEDS. THIS CAN FOSTER A SENSE OF BELONGING AND SOLIDARITY WITHIN THE COMMUNITY.

EFFICIENCY: HAVING A CENTRALIZED RESOURCE GUIDE CAN STREAMLINE THE HELP-SEEKING PROCESS, SAVING TIME AND EFFORT FOR BOTH INDIVIDUALS SEEKING HELP AND ORGANIZATIONS PROVIDING SERVICES. IT REDUCES THE NEED FOR INDIVIDUALS TO SEEK INFORMATION FROM MULTIPLE SOURCES.

PREVENTION AND INTERVENTION: RESOURCE GUIDES OFTEN INCLUDE INFORMATION ABOUT PREVENTIVE SERVICES AND INTERVENTIONS THAT CAN HELP ADDRESS PROBLEMS BEFORE THEY ESCALATE. FOR EXAMPLE, PROVIDING INFORMATION ON MENTAL HEALTH SERVICES CAN HELP PEOPLE ACCESS SUPPORT BEFORE THEY REACH A CRISIS POINT.

PROMOTING EQUITY: ACCESS TO RESOURCES AND SERVICES IS ESSENTIAL TO PROMOTING EQUITY WITHIN COMMUNITIES. RESOURCE GUIDES CAN HELP ENSURE THAT ALL COMMUNITY MEMBERS HAVE ACCESS TO THE SUPPORT THEY NEED, REGARDLESS OF SOCIOECONOMIC STATUS, RACE, ETHNICITY, OR OTHER FACTORS.

COMMUNITY DEVELOPMENT: BY FACILITATING ACCESS TO RESOURCES THAT SUPPORT EDUCATION, EMPLOYMENT, HEALTH, AND OTHER ESSENTIAL NEEDS, RESOURCE GUIDES CONTRIBUTE TO THE OVERALL DEVELOPMENT AND WELL-BEING OF THE COMMUNITY.

Our Mission

CENTER FOR STUDENT SUCCESS/RECURSOS PARA LATINOS DE
SOUTHWEST ARKANSAS

"Empowering people to overcome obstacles and reach their full potential. Through innovative programs and dedicated support, we strive to create inclusive communities where every person can thrive. Together, we break down barriers, unlocking opportunities for growth, success and lasting change."

Erika Buenrostro

FOUNDER OF LSWA



Our Team

CENTER FOR STUDENT SUCCESS/RECURSOS PARA LATINOS DE
SOUTHWEST ARKANSAS

Erika Buenrostro C.P.C

Founder of LSWA and Director of the Center for Student Success



Erika Buenrostro was born in Mexico City, Mexico and has worked for UA Cossatot in De Queen Arkansas since 2013. Certified life coach who received her Associates of Arts degree in 2006 at UA Cossatot, Bachelor's degree in Human Resources Development in 2008 and Masters of Education from U of A Fayetteville in 2016. Erika has also completed 18 Graduate level credits towards a second Masters in Romance Language from the University of New Orleans. She also teaches Spanish for UA Cossatot and holds various training and certifications. Erika writes and manages grants for the center and is an exceptional, highly motivated, dedicated person who carries the attitude and compassion for the community she serves. She is a higher education advocate leading student initiatives in Sevier County. Additionally, Erika represents the college on statewide panels and conferences. In addition to her service and education Erika is a board member for CADC, chair for the Single Parent Scholarship Fund of Sevier Co., Rotary Club, Southwest Mental Health and sits on other various local and statewide committees.

Beverly Litchford

JAG Coach

SNAP, leadership, food pantries, hygiene items, academic preparation

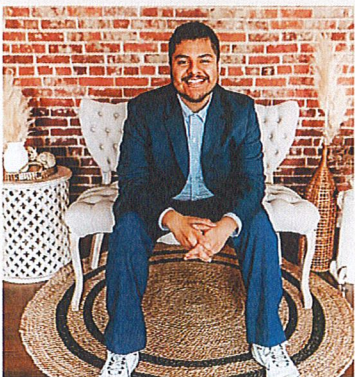


From Horatio, Arkansas, Beverly Litchford has worked for the college since August 2014. She received her Associates of Applied Science and Business in 2015, 2006. Beverly in 2006 graduated with her Associates of Applied Science in Business Management and holds various certifications and trainings. Beverly heads up the Nashville food pantry. She also works with a cohort of students experiencing barriers to success in education, particularly in higher education on the Nashville and De Queen campuses.

Angel Olguin

JAG coach

SNAP, leadership, food pantries, hygiene items, academic preparation



Angel is a native of De Queen, Arkansas, and a De Queen High School alum. In 2017, he graduated from UA Cossatot with an Associates of Arts degree. Henderson State University awarded him a Bachelor of Science in Education with a focus on art education in 2020. As an art teacher at Ashdown School District, Angel gained invaluable experience working with students. He currently oversees the food pantry at Ashdown Campus. At the Ashdown and De Queen campuses, Angel will be working with a group of students who face obstacles to their academic success, particularly in higher education.

www.cccua.edu/student-life/center-for-student-success.html

Our Team

CENTER FOR STUDENT SUCCESS/RECURSOS PARA LATINOS DE
SOUTHWEST ARKANSAS



Litzi Flores

*Title III Soft Skill and Financial Literacy Trainer
SNAP, food pantry, hygiene items*

Litzi is a 2022 graduate of De Queen High School and holds an Associate of Science in Criminal Justice and a Technical Certificate in General Studies from UA Cossatot. Litzi heads up the De Queen food pantry and has vast experience in community planning, leadership development, civic awareness, service learning, career preparation and social awareness. She is actively involved in the UAC Student Ambassador and JAG, Rotaract, and Phi Theta Kappa programs. Litzi is currently working towards a criminal Justice degree from UCA. Her goal is to become an immigration lawyer and be a voice for those that are not able to speak up for themselves.



Misti Eudy

*Student Activities Coordinator
Phi Theta Kappa Ambassadors Leadership Program, coordinator of new student organizations at UA Cossatot campuses.*

Misti is a graduate of Foreman High School. She graduated from UA Cossatot with her Associates of Arts: Teaching, Associates in General Studies, Associate of Science: AEK6, Certificate of Proficiency: Teaching, Technical Certificate: General Studies and a Technical Certificate: Teaching in 2023. Misti helps provide Student Ambassadors and Phi Theta Kappa with leadership by establishing goals, planning activities, and facilitating successful implementation. As part of the ambassador program, Misti focuses on civic engagement, leadership development, community engagement, service learning, career preparation, and feed the students events. She also works with current and other student organizations to help implement policies and procedures.

UA Cossatot Ambassadors & JAG

UA Cossatot Student Leadership Groups

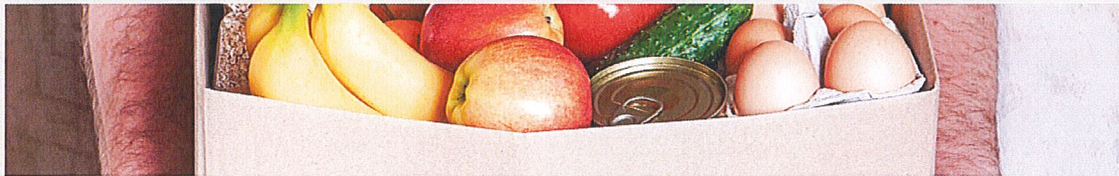


UA Cossatot JAG students and UA Cossatot Ambassadors are current students chosen to be the face of UA Cossatot on campus and in the community. Through their efforts they reach out to prospective students, sharing personal UA Cossatot experiences and successes. UA Cossatot student ambassadors are hardworking, honest, curious, adventurous and have strong communication skills as well as high academic standards. In exchange for their service, these students receive tuition waivers and experiences that contribute to their personal development... and fun!

www.cccua.edu/student-life/center-for-student-success.html

Resource List

CENTER FOR STUDENT SUCCESS/RECURSOS PARA LATINOS DE
SOUTHWEST ARKANSAS



Food Pantries

| | | | | | |
|----------------------------|--|---|--------------|--------------|---|
| Sevier County | Harvest Regional Food Bank | 3120 E. 19th St., Texarkana, AR 71854 | 870-774-1698 | | https://harvestregionalfoodbank.org |
| | Arkansas Hunger Relief Alliance | 1400 W Markham St# 304, Little Rock, AR 72201 | 501-399-9999 | | www.arhungeralliance.org |
| | De Queen Church of Christ | 1305 W. Collin Raye Drive, De Queen, AR 71832 | 870-584-3226 | | https://www.dqcoc.com |
| | St. Barbara's Catholic Church Summer Meals | 502 W. De Queen Ave. De Queen, AR 71832 | 870-642-2256 | | |
| | First Assembly of God Loving Hearts Food Care Ministries | 1440 W Collin Raye Drive, De Queen, AR 71832 | 870-584-3435 | | dequeenfirstassembly.org |
| | First Baptist Church De Queen (Monthly) | 1535 W. Collin Raye Drive, De Queen, AR 71832 | 870-642-2151 | | https://fbcdequeen.com |
| | Faith and Deliverance Center | 322 N. Third Street, De Queen, AR 71832 | 870-584-3340 | | |
| | First Baptist Church Lockesburg | 3466 S. Camelia, Lockesburg, AR 71864 | 870-289-2121 | | |
| | The Chalice Cupboard | 315 N. 5th St., De Queen, AR 71832 | 870-784-2525 | | |
| | Seventh Day Adventist | 1446 Red Bridge Rd., De Queen, AR 71832 | 870-642-4876 | | |
| | Angel Food Ministries Rosehill Babilist Church | 204 Church St., De Queen, AR 71832 | 871-584-3570 | | |
| | De Queen Senior Center (60+) | 605 E Haes Ave., De Queen, AR 71832 | 870-642-6046 | | |
| | Geneva GEMS | 188 Geneva Church Rd., De Queen, AR 71832 | 870-584-6389 | 870-279-2657 | |
| | Horatio Methodist Food Pantry | 303 Pennock, Horatio AR 71842 | 870-279-3016 | | |
| Howard County | | | | | |
| | Bread of Life | 301 W Dodson, Nashville, AR | 870-845-8809 | | |
| | Dierks Community Food Pantry | 811 N Missouri Ave, Dierks, AR | 870-557-1379 | | |
| | Mineral Springs Church of Christ | 318 Bridgeman Drive, Mineral Springs, AR | | | |
| | Nashville Senior Center | 206 E St., Nashville, AR | 870-845-1474 | | |
| | New View Church of Christ | 11166 HWY 278 WEST, Nashville, AR | 903-244-2541 | | |
| Little River County | | | | | |
| | Ashdown Senior Center | 1321 Gordon Dr., Ashdown, AR | 870-667-7117 | | |
| | Ashdown United Methodist Church | 145 E. Commerce St., Ashdown, AR | 870-898-5738 | | |
| | Community Alternative Prevention Program | 205 W 6th Ave., Foreman, AR | 870-542-7454 | | |
| | Community Freewill Baptist Church | 791 S. Martin Luther King Dr., Ashdown, AR | 903-280-8208 | | |
| | FBC Foreman | 915 Schuman St., Foreman, AR | 870-542-6294 | | |
| | Foreman Senior Center | 221 N. Bell St., Foreman, AR | 870-667-7117 | | |
| | Old Center Community Pantry | 715 High St., Winthrop, AR | | | |



Migrant Services

| | | | | | |
|--|---|---|--------------------------|-----------------------------------|---|
| Legal assistance, advocacy and information | Arkansas United | 8619 Chicot Rd. , Little Rock, AR 72703 | Dept. Legal 479-347-2824 | Emergencias/Hot line 479-763-2822 | https://arkansasunited.org |
| Legal assistance, advocacy and information | Seis Puentes | 4202A Camp Robinson Rd. North Little Rock, AR 72118 | 504-246-5188 | | https://seispuentes.org |
| Legal assistance, advocacy and information | Arkansas Immigrant Defense | 1200 W. Walnut, Rogers, AR | 479-925-9095 | | https://aidarkansas.com |
| Legal assistance, advocacy and information | Servicios Catholicos de Inmigracion | 2414 N. Tyler St. Little Rock, AR 72207 | 501-664-0340 | | https://www.dolr.org/chatholic-charities/immigration |
| Legal assistance, advocacy and information | Immigration Arkansas, Inc. | 1250 Central Ave. Central City, AR 71901 | 501-777-4716 | | https://immigrationarkansas.com |
| Tourist Visa 60+ | Raises del Sur | | 479-925-0235 | | www.raicesdelsur.com |
| ITIN, Taxes - Authorized Agent | J&C Multiservices, LLC- Se Habla Español | 5517 John F Kennedy Blvd, North Little Rock, AR | 501-291-9466 | | |
| ITIN, Taxes - Authorized Agent | SouthWest Ark. Accounting Services LLC- Se Habla Español | 990 E Collin Raye Dr, De Queen, AR 71832 | 870-642-5900 | | |
| Life Coach, Academic Coach, Freelance Translator, Notary Public, Notary Public | EB Consulting | 209 E Stilwell Ave. De Queen, AR 71832 | 870-784-5154 | | erika-b-consulting.com |



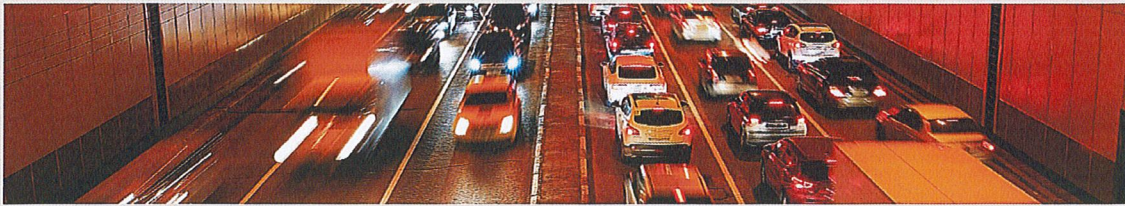
Scholarship Opportunities

| | | | | |
|---|---|--------------|--|---|
| Single Parent Scholarship of Sevier County | | | | Home - SPSFNWA |
| CADC Single Parent Scholarship | | | | https://www.cadc.com/single-parent-scholarship |
| Career Pathways | 183 College Drive, De Queen, AR 71832 | 870-584-1119 | | careerpathways@ccua.edu |
| Hispanic Womens Organization of Arkansas-HWOA | | 479-751-9494 | | https://www.hwoa.org |
| UA Cossatot Foundation | 183 College Drive, De Queen, AR 71832 | 870-584-4471 | | https://www.ccu.edu/pay-for-college/scholarships.html |
| Arkansas Single Parent Scholarship Fund- All other counties | | | | Arkansas Single Parent Scholarship Fund Arkansas Scholarships (aspsf.org) |



Public Assistance

| | | | | |
|--|---|---------------------------------------|--------------|---|
| Low Income Home Energy Assistance Program (LIHEAP) | Central Arkansas Development Council (CADC) | 821 N. Maple St., De Queen, AR 71832 | 870-982-9701 | https://www.cadc.com/utility-assistance |
| Food, lodging, gas, clothing | Salvation Army- Sevier County | 223 Stilwell Ave., De Queen AR, 71832 | 870-642-3463 | https://www.salvationarmyusa.org/usn/ |
| Food, lodging, gas, clothing | Salvation Army- Howard County | | 870-845-0404 | |
| Food, lodging, gas, clothing | Southwest Ark. Development Council | 605. E. Haes Ave., De Queen, AR 71832 | 870-642-3540 | |



Transportation

| | | | |
|---|---|---------------------|--|
| <p>Central Arkansas Development Council (CADC) (Public Transport)</p> | <p>821 N. Maple St., De Queen, AR 71832</p> | <p>870-982-9701</p> | <p>https://www.cadc.com</p> |
| <p>Southwest Development Council (Medicaid Transportation)</p> | | <p>888-772-5773</p> | |



Services for the Blind

| | | | | |
|---|---|--------------------------|-------------------------------|--|
| <p>DHHS Division of Services to the Blind</p> | <p>380 Airport Plazza Texarkana, AR 71854</p> | <p>870-642- 2623</p> | <p>FAX: 870- 642-2082</p> | |
|---|---|--------------------------|-------------------------------|--|



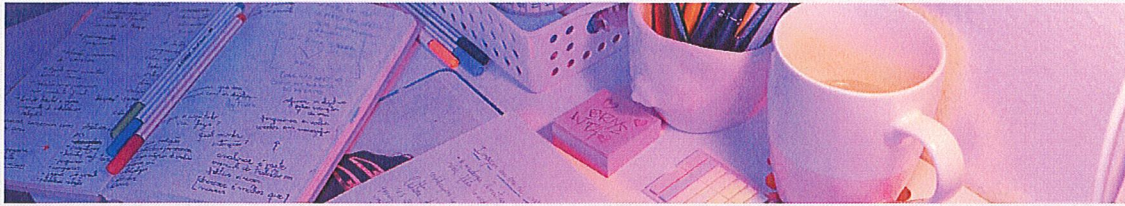
Childcare

| | | | | |
|--|---|--------------|-------------------|--|
| DHHS Division of Child Care and Early Childhood of Education | 924 E. Collin raye Drive Suite B De Queen, AR 71832 | 870-642-2623 | FAX: 870-642-2082 | |
| Lisa's Lollipop Land | Oak Drive De Queen, AR 71832 | 870-642-2099 | | Lisa's Lollipop Land DE QUEEN AR (childcarecenter.us) |
| Shonda's Sunshine Care | Oak Drive De Queen, AR 71832 | 870-642-5930 | | Shondas Sunshine Care Home Preschool - De Queen, AR 71832 Upwards (formerly WeeCare) |
| The Wee Center First Baptist | 1555 W. Collin Raye Drive De Queen, AR 71832 | 870-642-4513 | | |
| Fun and Learn Land Sevier Co. Developmental Center | 161 Highway 399 De Queen, AR 71832 | 870-642-5164 | | |
| The Happy House Virginia Arnold | 712 W. Gilson De Queen, AR 71832 | 870-642-5279 | | |
| Pleasant Hill Missionary Baptist Church Child Care Center | 117 McHorse Road Lockesburg, AR 71846 | 501-318-8944 | | |
| Cossatot Preschool | 1429 W. Collin Raye Drive De Queen, AR 71832 | 870-642-5361 | | |
| Kathy's Kids | 909 Main Street Horatio, AR 71842 | 870-832-5717 | | |
| Little Red School House | 1121 W Johnson St, Nahville, AR | 870-845-7373 | | |
| Howard County Children's Center | 6 Julia Cir, Nashville, AR | 870-845-1211 | | |
| Kiddie Korner | 1010 W Sybert St., Nashville, AR | 870-845-1211 | | |
| Mary's Little Lamb Day Care | 11 W Olive ST, Ashdown, AR | 870-898-6283 | | |
| Noah's Ark Preschool | 460 NW Front St, Ashdown, AR | 903-280-8270 | | |



Family and Kids

| | | | | |
|---|--|---------------------------|-----------------------------------|---|
| Arkansas Autism Partnership | | 800-342-2923 | | |
| DHHS Division of Children and Family Services | 924 E. Collin raye Drive Suite B De Queen, AR 71832 | 870-642-2623 | FAX: 870-642-2082 800-285-1131 | Humanservices.arkansas.gov |
| Arkansas Department of Health, Sevier County | 304 N. 4th Street De Queen, AR 71832 | 870-642-2535 | | www.healthy.arkansas.gov |
| CASA (Court Appointed Special Advocates) | | 870-775-1252 | | |
| Child Abuse Hotline | | 800-482-5964 | | Child Abuse County of Orange Social Services Agency (ocgov.com) |
| Child Care Assistance | | 479-394-3100 | | |
| Child Care Licensing Specialist | | 870-352-5115 | | |
| Child Support Enforcement | | 870-772-3443 866-213-6643 | | |
| Connect Care | | 800-275-1131 | | www.seeyourdoc.org |
| Medicaid Client Assistance | | 800-482-8988 | | |
| Sevier County Developmental Center (developmental disabilities) | 161 Hwy. 399 De Queen, AR 71832 | 870-584-3995 | | |
| Howard County Children's Center (developmental disabilities) | 1577 Highway 371 West Nashville, AR 71852 | 870-845-1211 | Fax: 870-845-2810 | |
| Cedar Haven Behavioral Health | 311 N. Morrow Mena, AR 71953 | 479-394-2308 | | menaregional.com |
| Pinnacle Point Behavioral health Children 5-17 ONLY | 11501 Financial Centre Parkway Little Rock, AR 72221 | 501-223-3322 800-880-3322 | | |



Education

| | | | | |
|--|--|---------------------------|--|---|
| UA Cossatot-De Queen | 183 College Drive De Queen, AR 71832 | 870-584-4471 800-844-4471 | | www.cccua.edu |
| Cossatot East Adult Education-De Queen, Ashdown, Nashville | 919 E. Vandervoort De Queen, AR 71832 | 870-642-8804 | | Adult Education (cccua.edu) |
| U of A Cossatot - Nashville | 1558 Hwy. 371 West Nashville, AR 71852 | 870-845-2454 | | www.cccua.edu |
| U of A Cossatot - Ashdown | 1411 N Constitution Ave, Ashdown, AR | 870-898-4733 | | www.cccua.edu |
| De Queen Head Start | 915 E. Heynecker Ave. De Queen, AR 71832 | 870-642-7435 | | Head Start ECLKC (hhs.gov) |
| De Queen ABC | 915 E. Heynecker Avenue De Queen, AR 71832 | 870-584-9168 | | |
| Cossatot Preschool | 1429 W. Collin Raye Drive De Queen, AR 71832 | 870-642-5361 | | |
| Nashville Pre-School | 410 N 6th St, Nashville, AR | 870-845-2577 | | |
| SWADC Headstart | 415 N 4th St, Nashville, AR | 870-845-5567 | | |
| Parkhill Migrant ESL | 101 N. 9th Street De Queen, AR 71832 | 870-584-4312 | | |
| De Queen Special Education | 101 N. 9th Street De Queen, AR 71832 | 870-584-4312 | | |
| Horatio Headstart | 205 S. Blackhawk Horatio, AR 71842 | 870-832-3753 | | Horatio Public Schools (horatioschools.org) |
| Horatio Preschool | 207 Isbell Horatio, AR 71842 | 870-832-4102 | | |
| De Queen-Mena Coop | 305 S. Hornberg Avenue Gillham, AR 71841 | 870-386-2251 | | Home DeQueen-Mena Education Service Cooperative (dmesc.org) |
| De Queen Schools Superintendent | 101 N. Ninth Street De Queen, AR 71832 | 870-584-4312 | | |
| Horatio Schools Superintendent | 204 Lawson Lane Horatio, AR 71842 | 870-832-1940 | | Horatio Public Schools (horatioschools.org) |
| Legacy Academy | 124 Darter Circle Lockesburg, AR 71846 | 870-642-8937 | | Legacy Academy, Faith-Centered Education PK-12 (legacywarriors.org) |
| Arkansas Rehabilitation Services | | 870-773-2807 | | |



Employment

| | | | | |
|---|---|--------------|--|--|
| Pilgrim's | 401 S. 3rd Street de Queen, AR 71832 | 870-584-5248 | | www.pilgrims.com |
| HPI - Husqvarna Products Industries LLC | 139 Old Airport Road Nashville, AR 71852 | 870-451-9120 | | |
| Mission Plastic of Arkansas, Inc | 102 Mission Drive Nashville, AR 71852 | 870-845-4085 | | www.missionplastics.com |
| Tyson Foods Plant | Grannis, Arkansas Broken Bow, Ok | 870-385-2331 | | High Quality Fresh & Frozen Chicken Products Tyson® Brand |
| Tyson Foods Plant | 100 E. Cassady Street Nashville, AR 71852 | 870-845-1473 | | |
| Workforce Center | 1702 Hampton Rd. Texarkana TX 75503 | 870-216-4011 | | |
| Manpower | 182 Hwy 71 N. De Queen, AR 71832 | 870-642-4755 | | www.work4manpower.com |
| AR Dept. of Labor | | 501-682-4500 | | Arkansas Department of Labor and Licensing |
| Experience Works (Job placement age 55 & older) | | 501-225-3520 | | |
| State of AR Employment | | | | www.arstatejobs |
| Unemployment Benefits | | | | www.arjoblink.arkansas.gov |



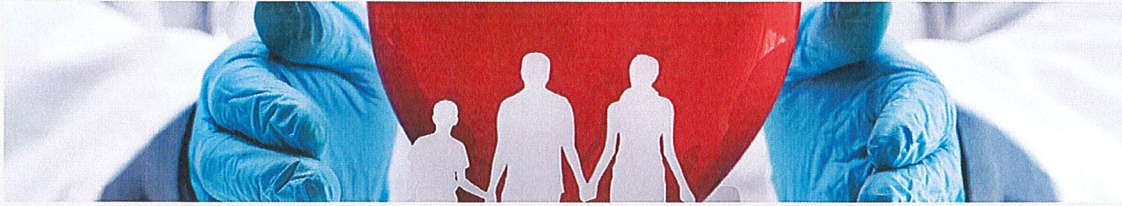
Housing

| | | | | |
|---|--|---------------------------|--|--|
| Sevier County Housing Authority | 307 S. 13th Street De Queen, AR 71832 | 870-642-2960 | | Home - Sevier Housing |
| Christopher Homes - De Queen Horatio | 119 S. Lakeside Drive 408 Bruce street | 870-642-6211 870-832-4014 | | www.christopherhomesofarkansas.org |
| Kingsgate Apartments | 287 W. Locke Ave. De Queen, AR 71832 | 870-642-6555 | | |
| Pinehurst Apartments | 180 W. Locke Avenue De Queen, AR 71832 | 870-642-6800 | | |
| De Queen Villas | 100 Treating Plant Rd De Queen, AR 71832 | 870-642-2329 | | |
| Northgate apartments | 14th Street De Queen, AR 71832 | 870-642-5820 | | |
| Timber Ridge Apartments | 412 N. 4th De Queen, AR 71832 | 870-642-5638 | | |
| Section 8 Rental Assistance | 3418 N. Camellia Lockesburg, AR 71846 | 870-289-4000 | | |
| Salvation Army Homeless shelter - Adults & Families | 316 E. Hazel Texarkana, AR 71854 | 870-774-2701 | | |
| Randy Sam's Outreach Shelter - Adults - No Children | 402 Oak Street Texarkana, TX 75501 | 903-792-7024 | | randysams.org |



Legal

| | | | | |
|---|--------------------------------|--------------|--|--|
| Arkansas Legal Services Partnership | | 800-950-5817 | | www.arlegalservices.org |
| Public Defender - Sevier County | P.O. Box 71 De Queen, AR 71832 | 870-642-8370 | | |
| Arkansas Volunteer Lawyers for the Elderly - 55 & older | | 501-376-9263 | | |
| Attorney General's Office | | | | gotyourback@arkansas.gov |
| Crime Victim Reparations | | 800-448-3014 | | CrimeVictims@ArkansasAG.gov |



Medical

| | | | | |
|---|--|---------------------------|--|---|
| Arkansas Department of Health - Sevier | 304 N. 4th De Queen, AR 71832 | 870-642-2535 | | www.healthy.arkansas.gov |
| De Queen Hospital | 960 U. S. Hwy 71, De Queen, AR 71832 | 870-642-6420 | | Sevier County Medical Center |
| Access Arkansas | | | | www.access.arkansas.gov |
| Connect Care | | 800-275-1131 | | www.seeyourdoc.org |
| DHHS - Division of Human Services | 924 E. Collin Raye Drive Suite B De Queen, AR 71832 | 870-642-2623 800-285-1131 | | Humanservices.arkansas.gov |
| Dr. Randy Walker, M.D. | 1553 W. Collin Raye Dr. De Queen, AR 71832 | 870-584-3000 | | |
| Healthcare Express | 1021 W. Collin Raye Dr. De Queen, AR 71832 | 870-433-0790 | | www.gohce.com |
| Healthy Connections | 1206 W. Collin Raye Dr. De Queen, AR 71832 | 870-642-4364 | | healthy-connections.org |
| Lofton Family Clinic/ Dr. Jason Lofton | 203 De Queen Ave. De Queen, AR 71832 | 870-642-4000 | | Dr. Jason Lofton, MD - Family Medicine Specialist in De Queen, AR Healthgrades |
| Mitchell Medical Dr. Keith Mitchell | 155 Hwy. 71 N De Queen, AR 71832 | 870-642-8818 | | www.mitchellmed.com |
| Schroer Medical, LLC | 3397 N. Camellia Lockesburg AR 71846 | 870-289-5190 | | schroermedical.com |
| Houser Family Medical | 101 W. Main Lockesburg AR 71846 | 870-289-0001 | | |
| Samantha Lampi - ANP | 1553 W. Collin Raye Dr. De Queen, AR 71832 | 870-584-3000 | | |
| Colleen Janes - ANP | 1553 W. Collin Raye Dr. De Queen, AR 71832 | 870-584-3000 | | drandywalker.com |
| Ginger Morris - ANP | 1553 W. Collin Raye Dr. De Queen AR 71832 | 870-584-3000 | | drandywalker.com |
| Jessica Houser - ANP | 1553 W. Collin Raye Dr. De Queen, AR 71832 | 870-584-3000 | | housermedical.com |
| Brad Patterson - ANP | 1553 W. Collin Raye Dr. De Queen, AR 71832 | 870-584-3000 | | Bradley W Patterson - Nurse Practitioner, De Queen AR (healthcare4ppl.com) |
| Dena Hibbs - ANP | 1553 W. Collin Raye Dr. De Queen, AR 71832 | 870-584-3000 | | drandywalker.com |
| Tonya Chambers - ANP | 1553 W. Collin Raye Dr. De Queen, AR 71832 | 870-584-3000 | | |
| Emilee Vaught - ANP | 206 W. Main Street Horatio, AR 71842 | 870-832-5848 | | |
| Ladonna Batty - ANP | 1357 W. Collin Raye Dr. De Queen, AR 71832 | 870-642-2000 | | |
| Dr. Terry Devlin | 500 E. Collin Raye Dr De Queen, AR 71832 | 870-642-4364 | | |
| Dr. Floyd Gonzalez | 821 N. Maple De Queen, AR 71832 | 870-642-8640 | | Dr. Floyd Gonzalez, MD - Pediatric Medicine Specialist in De Queen, AR Healthgrades |
| Arkansas Tobacco Quitline | | 800-784-8669 | | |
| Genesis Helpline | 919 Hobson Hot Springs, AR | 501-321-8700 | | |
| Missing in Action Mon - Wed. 6:00 - 7:00 | 812 Hwy. 71. South Mena, AR 71953 | | | |
| New Ways Better Days St Agnes Church | 203 8th St. Mena, AR 71953 | | | https://www.stagneschurchmena.org/ |
| Medicaid Client Assistance | | 800-482-8988 | | www.medicaid.state.ar |
| Narcotics Anonymous & AA | 511 W. Stillwell Dequeen, Ar, 71832 7pm Tues & Thus | | | |
| Choices Counseling Center | 115 W Howard St. Nashville, AR 71852 | 800-591-6474 | | |
| Odyssey Group | 202 W. Howard St. Nashville, AR 71852 | 800-591-6474 | | |
| Howard County Memorial Hospital | 130 Medical Circle Nashville, AR, 71852 | 870-845-4400 | | https://www.howardmemorial.com/ |
| Little River Memorial Hospital | 451 W. Locke St Ashdown, AR, 71822 | 870-898-5011 | | https://lrhm.org/ |
| King Medical Clinic | 180 U.S. HWY 71, Ashdown, AR 71822 | 870-898-5464 | | King Medical Clinic (kingmd.org) |
| VA Outpatient Clinic | 910 Realtor Rd. Texarkana, AR 71854 | 870-779-2700 | | https://www.va.gov/shreveport-health-care/locations/texarkana-va-clinic/ |
| VA Outpatient Clinic | 300 S. Morrow St. Mena, AR 71953 | 501-609-2700 | | https://www.va.gov/shreveport-health-care/locations/texarkana-va-clinic/ |



Dental

| | | | | |
|-------------------------------|--|--------------|--|---|
| Christine Jaquess | 1347 W. Collin Raye Dr. De Queen, AR 71832 | 870-642-5034 | | |
| Smiles of Arkansas | 110 W. De Queen Ave. De Queen, AR 71832 | 870-642-7645 | | https://www.smilesofarkansas.com/ |
| Mark Stewart | 1357 W. Collin Raye Dr. De Queen, AR 71832 | 870-584-3221 | | |
| Ashdown Dental Clinic | 1730 S. Constitutional Ave. Ashdown, AR 71822 | 870-898-5077 | | https://ashdowndental.com/ |
| Hillis Family Dentistry | 96 Webster Dr. Ashdown, AR 71822 | 870-898-8888 | | https://www.hillisfamilydentistry.com/ |
| Dr. Donald Sitzes | 121 W Howard St., Nashville, AR | 870-845-1901 | | |
| Nashville Family Dentistry | 700 N. Main St. Ste 1, Nashville, AR | 870-845-1263 | | |
| Gunter Robert E Dds | 202 E 3rd St, Dierks | 870-286-2112 | | |



Eye Care

| | | | | |
|--|--|--------------|--|---|
| Arkansas Eye Surgery Dr. Frank Teed- De Queen/Nashville | 203 De Queen Ave. De Queen, AR 71832 | 870-642-2525 | | |
| Ashdown Eye Care | 102 Southern Dr. Ashdown, AR 71822 | 870-898-7700 | | https://txkvision.com/ |
| Bell Vision Center | 708 S Main St, Nashville, AR | 870-845-5211 | | |
| Chaney Jr. Joe F OD | 119 W College St, Nashville, AR | 870-845-2020 | | |



Mental Health

| | | | | | |
|------------------|---|---|------------------------------|--|---|
| De Queen | | | | | |
| | Southwest Arkansas Counseling & Mental Health Center Inc. | 1312 Collin Raye Drive De Queen, AR 71832 | 870-584-7115 or 870-773-4655 | | |
| | Arkansas Rehabilitation Services | | 870-642-5992 | | https://humanservices.arkansas.gov/facilities/bear-creek-healthcare-llc/ |
| | Chenal Family Therapy | 304 W. Collin Raye Drive, Ste. 103 A De Queen, AR 71832 | 501-781-2230 | | https://chenaltherapy.com/ |
| | Daryl Mitchell, LCSW | 215 W. De Queen Ave. De Queen, AR 71832 | 870-642-5992 | | www.thespiritualifecycle.com |
| | Arkansas Counseling & Psychodiagnostics | 2607 Caddo St. Ste. 6 Arkadelphia, AR 71923 | 870-230-8217 | | www.acapcounseling.com |
| Nashville | | | | | |
| | Southwest Arkansas Counseling & Mental Health Center Inc. | 508 N. 2nd St. Nashville, AR 71852 | 870-845-3110 | | |
| | Arkansas Counseling & Psychodiagnostics | 2607 Caddo St. Ste. 6 Arkadelphia, AR 71923 | 870-230-8217 | | https://www.acapcounseling.com/ |
| Horatio | | | | | |
| | Arkansas Counseling & Psychodiagnostics | 2607 Caddo St. Ste. 6 Arkadelphia, AR 71923 | 870-230-8217 | | https://www.acapcounseling.com/ |
| Ashdown | | | | | |
| | Arkansas Counseling & Psychodiagnostics | 2607 Caddo St. Ste. 6 Arkadelphia, AR 71923 | 870-230-8217 | | https://www.acapcounseling.com/ |
| Mena | | | | | |
| | Mena Senior Behavioral Health | 311 N. Morrow Mena, AR 7923 | 479-394-7400 | | https://menaregional.com/senior-behavioral-health/ |
| | Cedar Haven | 311 Morrow St. N Mena, AR 71953 | 479-243-2380 | | https://menaregional.com/cedar-haven/ |
| | Western Arkansas Counseling & Guidance Center | 307 S. Cherry St. Mena, AR 71953 | 479-394-5277 | | https://wacgc.org/ |
| | Brentwood Hospital Behavioral Health | 1006 Highland Ave. Shreveport, LA 71101 | 877-678-7500 Or 318-678-7500 | | https://brentwoodbehavioral.com/ |
| Texarkana | | | | | |
| | Betty J. Feir Clinical Psychologist | 5501 Medical Parkway Texarkana, TX 75503 | 903-793-8588 | | http://www.drbettyfeir.com/ |
| | Southwest Arkansas Counseling & Mental Health Center Inc. | 2904 Arkansas Blvs. Texarkana, AR 71854 | 870-773-4655 | | |
| | Preferred Family Healthcare | 4232 Jefferson Ave. Texarkana, AR 71854 | 870-773-0700 | | https://pfh.org/ |
| | Professional Counseling Services of Texarkana | 218 N. Stateline Ave. Texakana, AR 71854 | 870-773-1685 | | https://www.counselingark.com/ |



Pharmacies

| De Queen | | | | | |
|-------------------|----------------------------|--|------------------------------|--|---|
| | De Queen Health & Wellness | 1357 W. Collin Raye Dr. De Queen, AR 71832 | 870-642-2400 or 888-496-7404 | | https://de-queen-health-wellness-pharmacy.hub.biz/ |
| | Pruett's Pharmacy | 500 E. Collin Raye Dr. De Queen, AR, 71832 | 870-584-3223 | | https://www.pruettsfood.com/my-store/pruetts-pharmacy |
| | Walmart Pharmacy | 926 E. Collin Raye Dr. DeQueen, AR 71832 | 870-642-6921 | | https://www.walmart.com/cp/pharmacy/5431 |
| | Harris Drug | 205 W. De Queen Ave. De Queen, AR 71832 | 870-584-3555 | | https://www.harrisdrug.com |
| Ashdown | | | | | |
| | Walmart Pharmacy | 297 Hwy. 32 By-Pas Ashdown, AR 71822 | 870-898-2142 | | https://www.walmart.com/cp/pharmacy/5431 |
| | Brookshires | 1310 S. Constitution Ashdown, AR 71822 | 870-898-5501 | | |
| | Walgreen's Pharmacy | 191 w. Main Ashdown, AR 71822 | 870-898-5151 | | https://www.walgreens.com/ |
| Dierks | | | | | |
| | Dierks Pharmacy | 323 Main Dierks, AR 71833 | 870-296-3131 | | www.facebook.com |
| Lockesburg | | | | | |
| | Pruett's Discount Pharmacy | 101 W Main, Lockesburg, AR 71846 | 870-289-2085 | | |